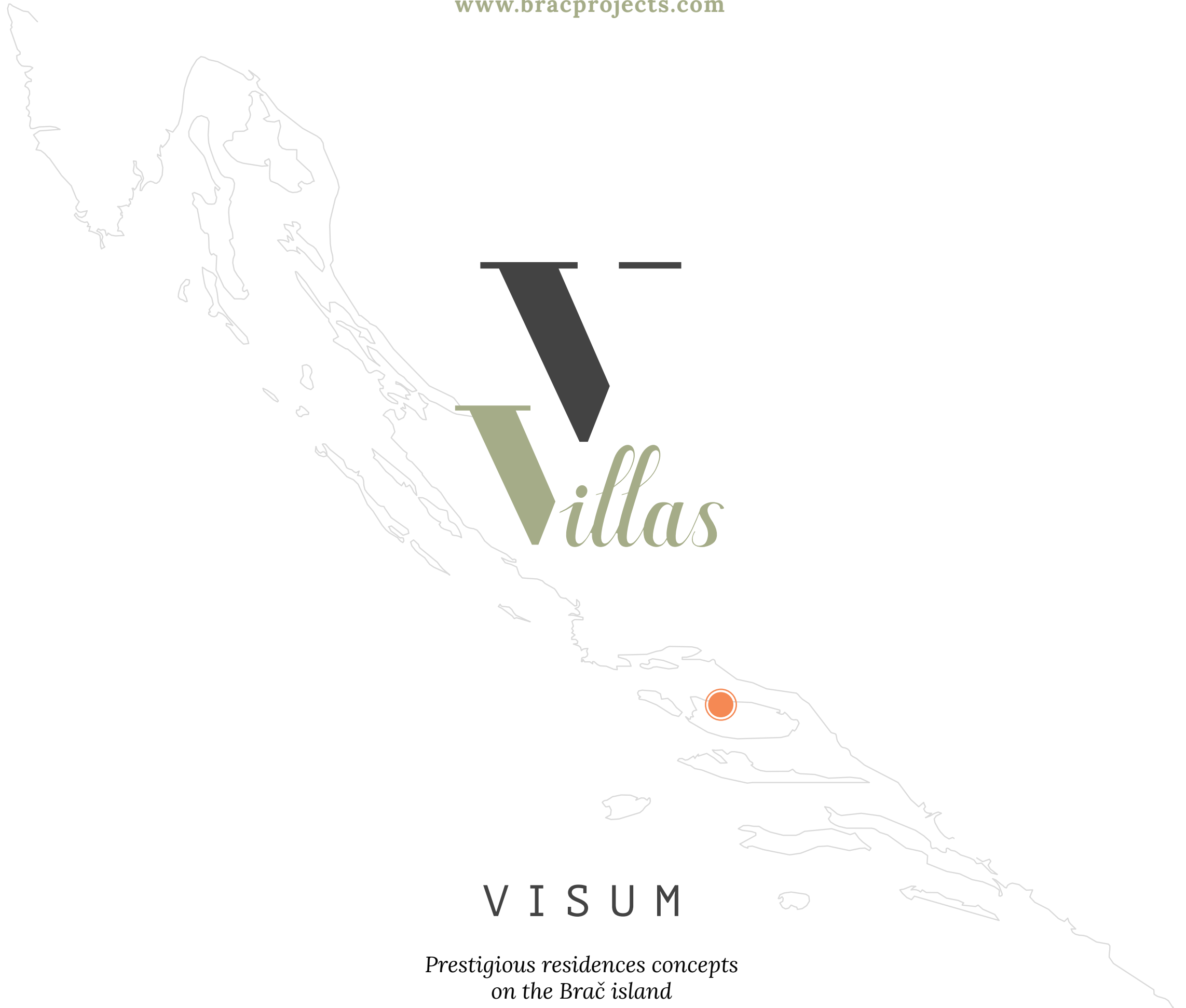




V I S U M

www.bracprojects.com



V I S U M

*Prestigious residences concepts
on the Brač island*

SUPETAR

Šarmantni gradić Supetar prostire se na sjevernoj obali otoka Brača. Zbog svoje intime i kristalno čistih plaža svake godine privlači sve više turista. To mu omogućuje odlična prometna povezanost. Ima zračnu luku i redovne trajekte. Otok je od Splita, najvećeg grada u Dalmaciji, udaljen manje od 20 km zračne udaljenosti.

The charming town of Supetar spreads on the northern shore of the island Brač. Due to its intimacy and crystal clear beaches, it attracts more and more tourists every year. This is made possible by the excellent transport connections. It has an airport and regular ferries. The island is less than 20 km in a straight line from Split, the biggest city in Dalmatia.





BRAČ



BOL



HVAR



SPLIT


- ŠIBENIK (106 km)
- ZADAR (177 km)
- DUBROVNIK (240 km)
- ZAGREB (430 km)
- PULA (538 km)

TROGIR
(47 km)

SPLIT (20 km)


1h10m

SUPETAR


BOL BEACH
(35 km)

MAKARSKA
(53 km)

HVAR
(66 km)

VIS (75 km)



Project location

Obuhvat je smješten usred maslinika, okupan suncem na sjevernim obroncima Brača. U blizini se mogu pronaći povijesne znamenitosti, lijepe plaže, udobni restorani, ali i skroviti kutci u prekrasnim maslinicima. Zahvaljujući raznolikosti otoka ovdje svatko može pronaći mjesto za sebe.

The presented location is in the middle of olive groves, basked in the sun on the northern slopes of Brač island. Nearby you will find historic landmarks, beautiful beaches, but also cozy restaurants or secluded nooks in beautiful olive groves. Thanks to its diversity, everyone can find a place for themselves here.

panoramski pogled
panoramic view



AQUAPARK
(850m)



NAJBLIŽA PLAŽA
NEAREST BEACH
(700m)



SUPERMARKET
(450m)



NAJBLIŽI PARK
NEAREST PARK
(700m)



CENTAR
CITY CENTRE
(1.4km)



TRAJEKTNA LUKA
FERRY PORT
(1.7km)



AUTOBUSNA POSTAJA
BUS STATION
(1.6km)



DOM ZDRAVLJA
MEDICAL CENTRE
(1.2km)



BENZINSKA POSTAJA
GAS STATION
(1.5km)



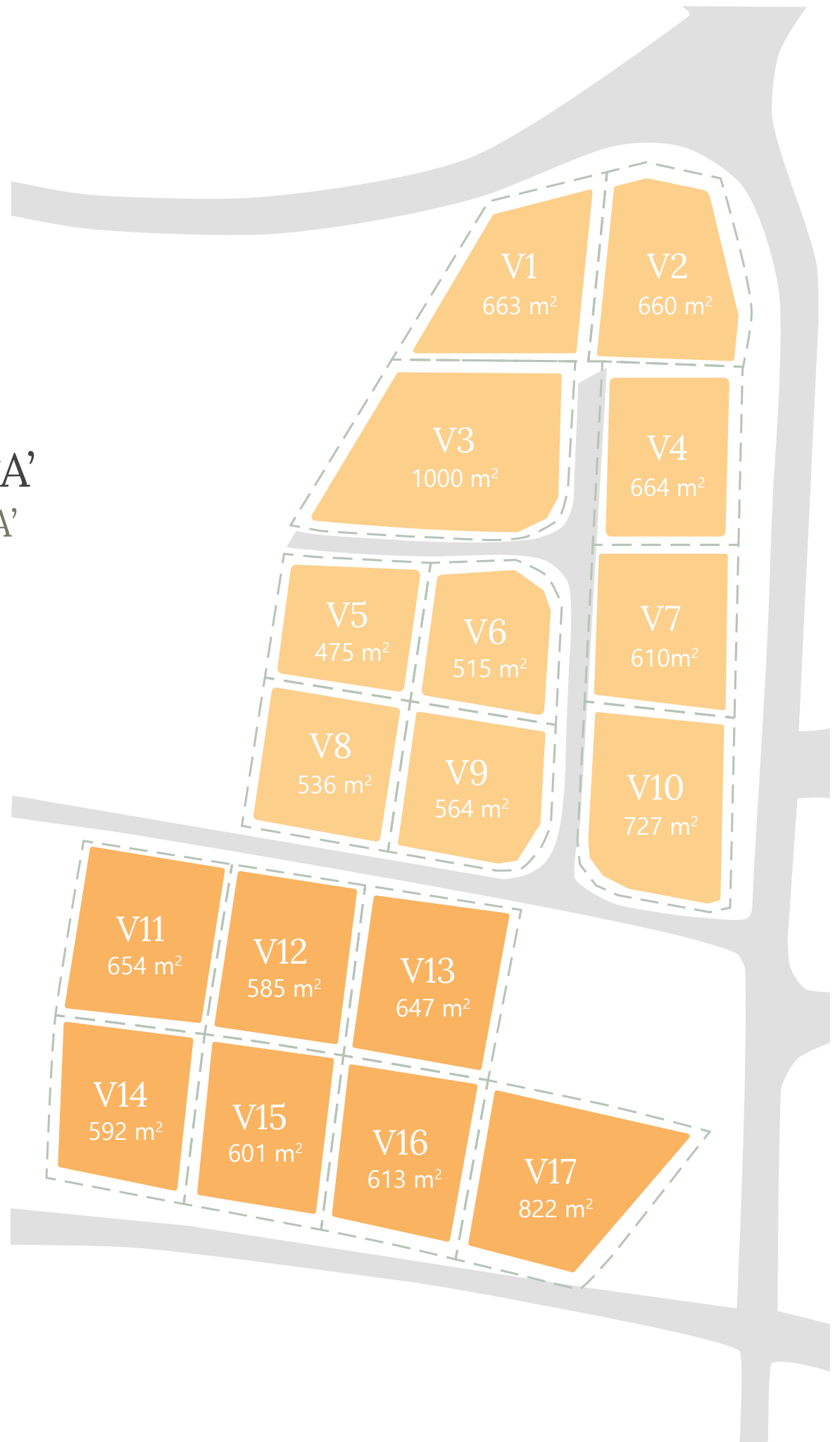
TRGOVINE
RETAIL FRONTAGE
(1.6km)





Zona 'A'
Zone 'A'

Zona 'B'
Zone 'B'



180° pogled
180° view








Prestigious residences concepts

VISUM VILLAS je inovativna investicija premium klase. Slikovito smještene rezidencije s visine gledaju na tirkizno Jadransko more. Dobro odabrana lokacija pruža jedinstvenu kombinaciju mira i opuštanja od gradske vreve nedaleko od samog centra mjesta.

VISUM VILLAS is an innovative premium class investment. Picturesquely situated residences overlook the turquoise Adriatic Sea from above. The well selected location provides a unique combination of peace and relaxation from the hustle and bustle of the city with being right in the center of events.





A panoramic view of a coastal town, likely Vis, Croatia. The foreground shows modern, white, angular buildings with flat roofs, partially obscured by green trees. In the middle ground, a dense cluster of traditional white buildings with terracotta roofs covers a hillside. The background features a clear blue sea and distant, hazy mountains under a bright sky.

VISUM VILLAS kao koncept stvoren je za ljude koji cijene mir i funkcionalnost u nježnom mediteranskom okruženju. Vile kombiniraju moderne trendove sa lokalnim mediteranskim stilom što ih čini posebnima, a ujedno omogućuje da se uklupe u okolinu.

VISUM VILLAS as a concept was created for people who value peace and functionality in a gentle Mediterranean environment. The villas combine modern trends with the local Mediterranean style, which makes them special and at the same time allows them to fit into the surroundings.







Zona 'A'

10 vila tradicionalnog stila

Zone 'A'

10 villas in a traditional form



V1
663 m²

V2
660 m²

V3
1000 m²

V4
664 m²

V5
475 m²

V6
515 m²

V7
610 m²

V8
536 m²

V9
564 m²

V10
727 m²







Villas

Tip 'A'
Type 'A'



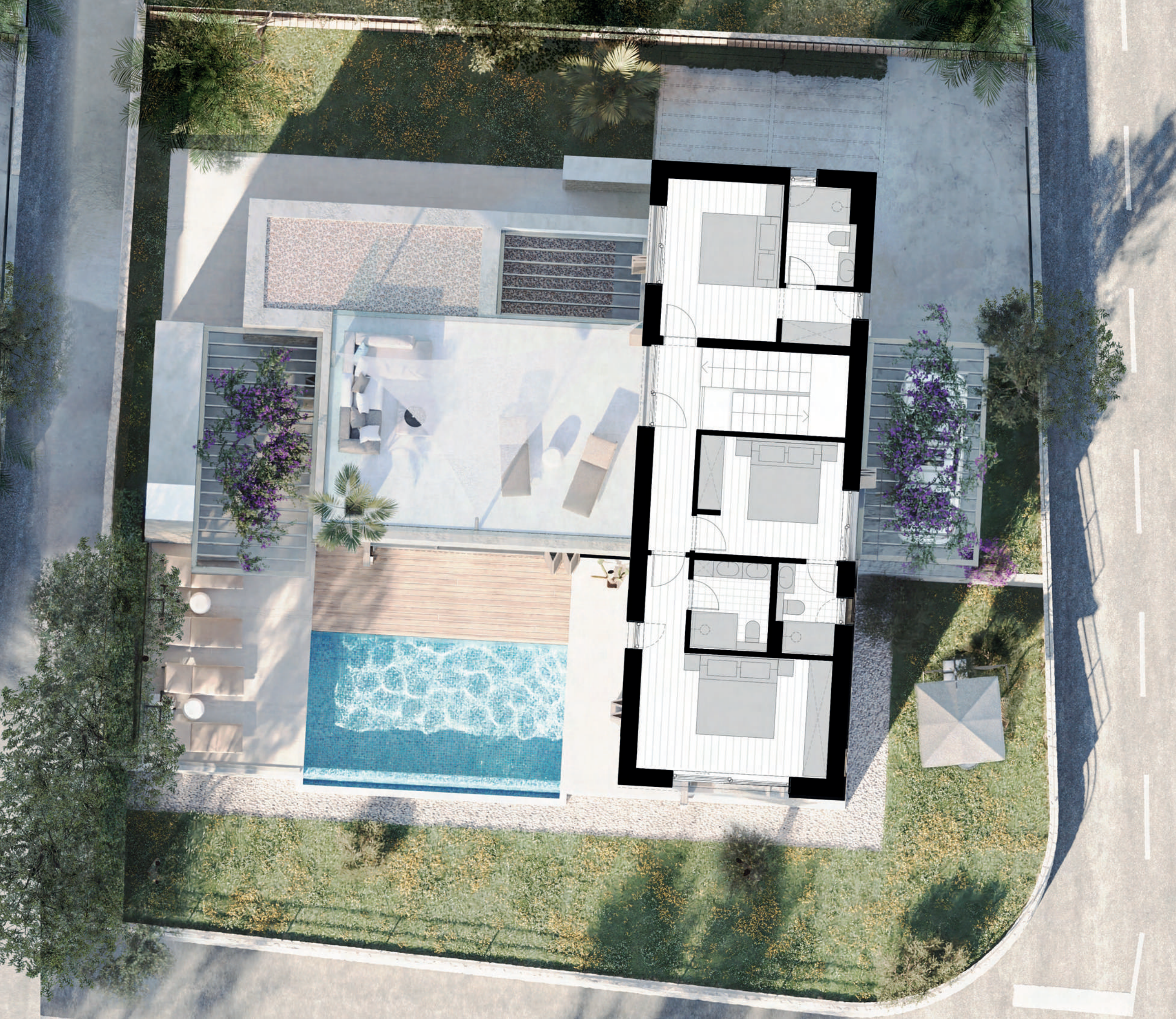


Villa tipa 'A' je klasična i bezvremenska s trunkom modernosti, izrađena od pažljivo promišljenih materijala. Stoljetna povijest otoka prikazuje se kroz kamene detalje koji prekrivaju fasadu. Kvadratura od 230m² brutto.

The type 'A' villa is classic and timeless with a touch of modernity, made of carefully thought out materials. The centuries old history of the island is revealed in the stone accents covering the facade. Total area - 230m².



















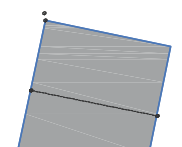
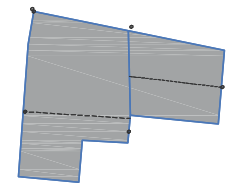
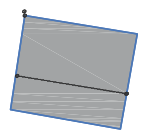
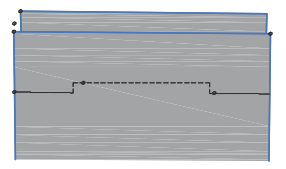
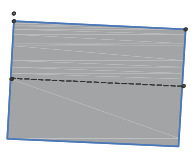
Zona 'B'

7 vila modernog stila

Zone 'B'

7 villas in a modern style











Villas

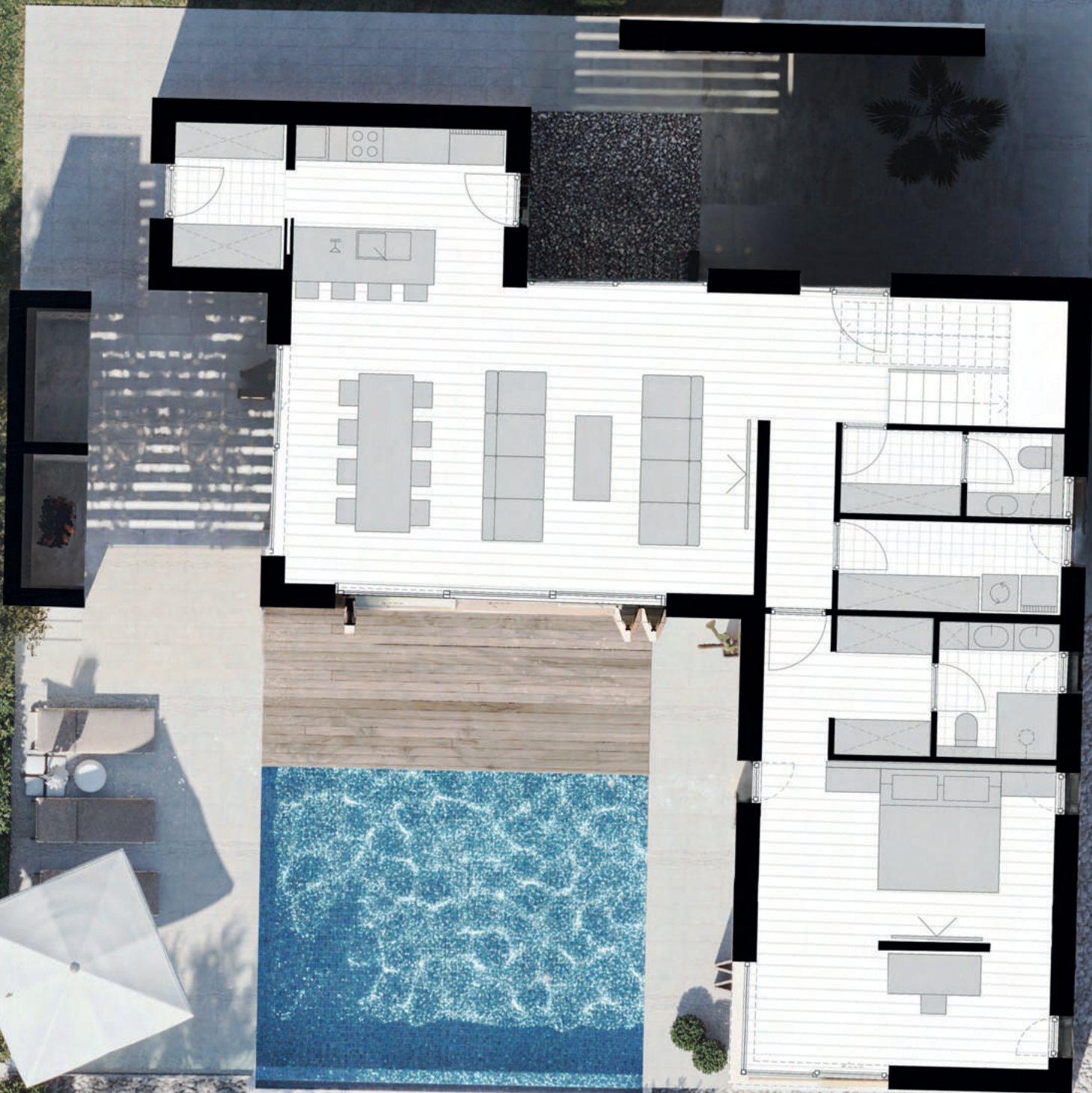
Tip 'B'
Type 'B'

Minimalistička stilska rješenja vile tipa 'B' sa velikom elegancijom nadopunjuju se s klasičnim materijalom od vapnenca nadovezivajući se na stoljetnu povijest otoka Brača. Ovi tipovi objekta imaju kvadraturu od 230m² brutto.

Minimalistic stylistic solutions of the type 'B' villas with great elegance complement the classic material of limestone referring to the centuries old history of the island of Brač.

Total area - 230m².

























BRAČ PROJEKTI d.o.o. za nekretnine
Supetar, Brač
Put Gaja 21
OIB 60686336489

V I S U M

bracprojects.com
info@bracprojects.com

